



TK International
020 7794 8700
www.t-k.co.uk

Residential Sales
Residential Lettings
Property Management

Sales Office:
9 Heath Street
Hampstead
London NW3 6TP
E: sales@t-k.co.uk

Lettings Office:
16-18 Heath Street
Hampstead
London NW3 6TE
E: lettings@t-k.co.uk

tk.international
TK International
TK International

Est.
1998



Havanna Drive Temple Fortune NW11

Discretely located within this secure gated and 24 hour portered domain, is this impressive 3,941 sq ft (net), double fronted detached 5-6 bedroom house. This impressive home was built approximately ten years ago and offers generous accommodation arranged over four floors and is presented in excellent decorative condition throughout.

The house provides an entrance lobby, drawing room, dining room and a large bright kitchen/breakfast/family room, as well as a guest WC and cloaks cupboard on the ground floor. The lower ground level boasts a gym/playroom, self contained one bedroom staff/guest flat and a utility room.

The first floor enjoys a principal bedroom suite comprising double bedroom, extensive en-suite dressing room & en-suite bathroom. There is a second bedroom suite on this floor and three bedrooms, two bathrooms (one en-suite) on the second floor.

This lovely family home also offers a wide 80' x 62' lateral south-east facing rear garden plus off street parking for four cars.

All the excellent shopping facilities of Temple Fortune, including Waitrose and Marks & Spencer, plus deli's, cafes and restaurants are all located close by as well as outstanding private schools such as Henrietta Barnett and King Alfred's.

£2,999,950

SOLE AGENT

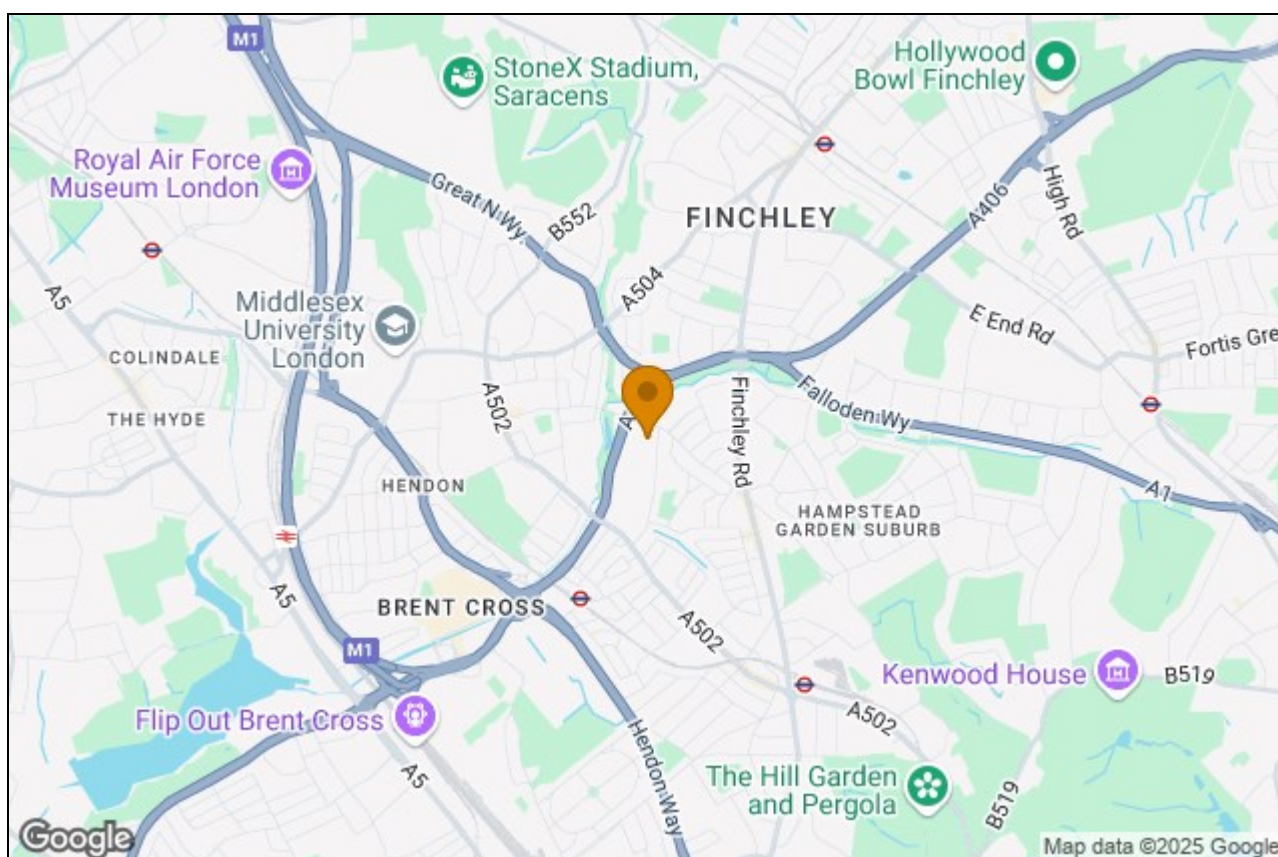
Freehold











Havanna Drive NW11

Gross internal area (approx.)

375 Sq m (4040 Sq ft) Including under 1.5m

366 Sq m (3941 Sq ft) Excluding under 1.5m

For identification only, Not to Scale



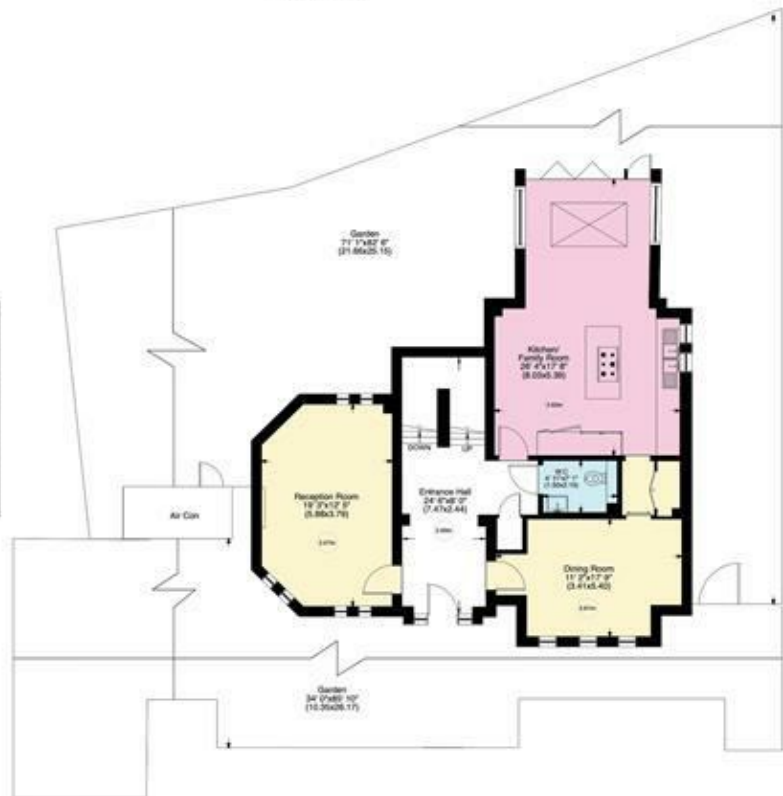
First Floor



Second Floor



Lower Ground Floor



Ground Floor

www.WilliamSalisbury.Photography

Not to Scale, for guidance only and must not be relied upon as a statement to fact. All measurements areas are approximate only (and have been prepared in accordance with the current edition of the RICS Code of Measuring Practice).

Havanna Drive NW11

Acre 0.12 (approx.)
For identification only, Not to Scale



www.WilliamSalisbury.Photography

Not to Scale, for guidance only and must not be relied upon as a statement to fact. All measurements areas are approximate only (and have been prepared in accordance with the current edition of the RICS Code of Measuring Practice).